

TT Headbox

Tissue making starts in the headbox.

Toscotec designed a complete line of hydraulic headboxes with or without dilution control in order to meet the various production requirements and match all the possible applications and the basis weight ranges. Each **TT Headbox** is customized and manufactured according to Customer's requirements in order to obtain an optimal formation of the paper. Great care has been paid into the dimensioning of the diffuser,

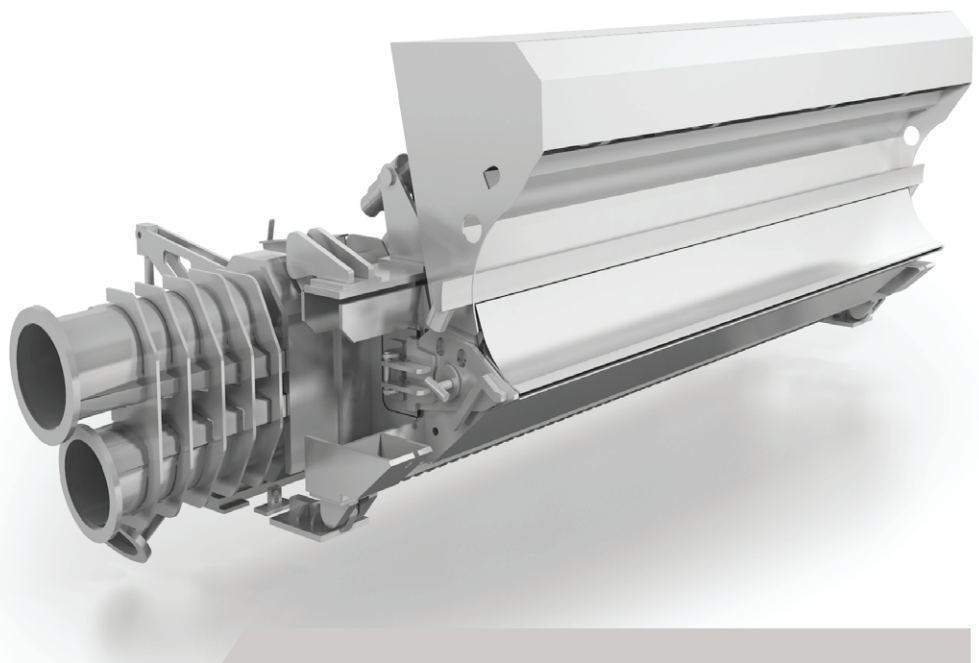
the minimizing of head losses and in optimizing the internal flow speed. Particular attention has been focused on the **TT Headbox** design to reduce fibres usage, working with higher consistencies without affecting the final tissue formation and softness. In order to fulfil the different tissue making demand, Toscotec proposes two headbox models:

TT Headbox-SLT and **TT Headbox-MLT**. Both the headboxes have been

entirely designed with 3D CAD softwares, and the geometrical configuration has been optimized through the Finite Element Analysis in order to verify the stress and flow distribution, improving the overall performance. All models of **TT Headbox** feature a cross profile adjustment system with automatic or manual jacks and lip opening control.

Benefits

- Higher Bulk Production
- Working at High Consistency for Energy Savings
- Better Sheet Formation
- Basis Weight Profile Improvement



Model	SLT	MLT
Type	Hydraulic	Hydraulic
Layers	1	1-3
Diffuser type	HD polyethylene block or Tubebank	Tubebank
Flow separation	No	Internal lamellas
Material	AISI 304 or AISI 316L	AISI 304 or AISI 316L
Dilution Control	No	Optional
Design Speed (mpm)	Up to 1800	Up to 2200
Pond Width (mm)	Up to 3700	Up to 5700

